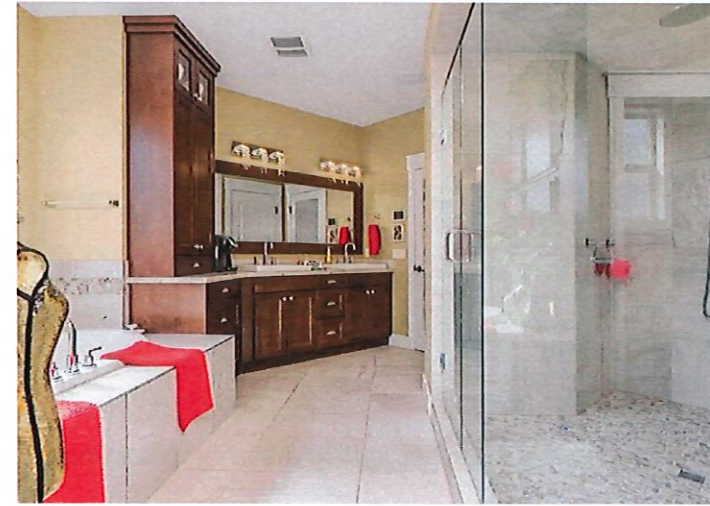
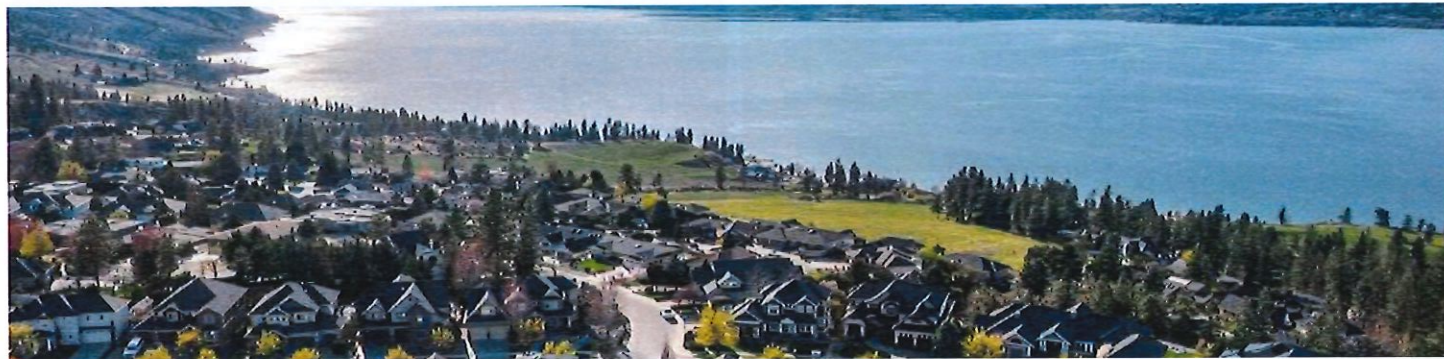


Property Features

- Exquisite lakeview estate with panoramic mountain and lake vistas
- Over 7,700 sqft of luxury living across three meticulously designed levels
- 4,600 sqft of open-concept living on the main and upper floors
- Chef's dream kitchen with 8-burner gas stove, double ovens & walk-in pantry
- Double-wide fridge, expansive counters & under-cabinet lighting overlooking the lake
- Spa-inspired primary suite with heated tile floors and stunning views
- Ensuite features soaker tub, 10mm glass shower & custom dressing room
- Five additional bedrooms, each with its own private ensuite
- 3,100 sqft walkout basement with heated concrete floors
- Includes a wine room and suspended slab theater for premium entertainment
- Saltwater pool and large deck perfect for relaxing or hosting guests
- Triple car garage, multiple decks and patios for seamless indoor/outdoor living
- Dual laundry rooms with newer washer and dryer
- Powered blinds, built-in sound system, two furnaces & new Navien hot water tank
- Potential for nanny or in-law suite; extensive upgrades throughout





Year Built: 2012

Lot Size: 0.39 acres

7,724 Square Feet

6 Bedrooms 7 Bathrooms

Parking: Triple garage

CONTACT US FOR MORE INFORMATION: 250.549.8115 | donkassa@donkassa.com | donkassa.com

The information contained herein is deemed reliable but cannot be guaranteed as to its accuracy. Any information of special interest should be obtained through independent verification.



354 Quilchena Drive

